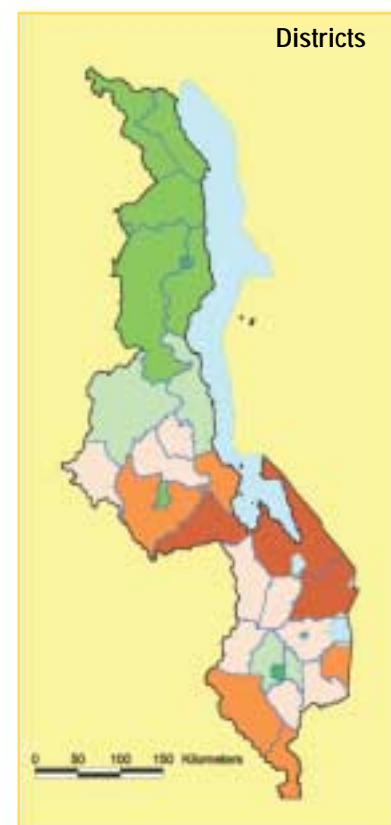
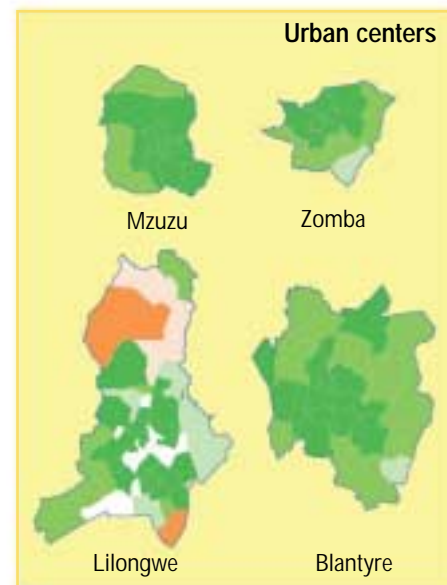
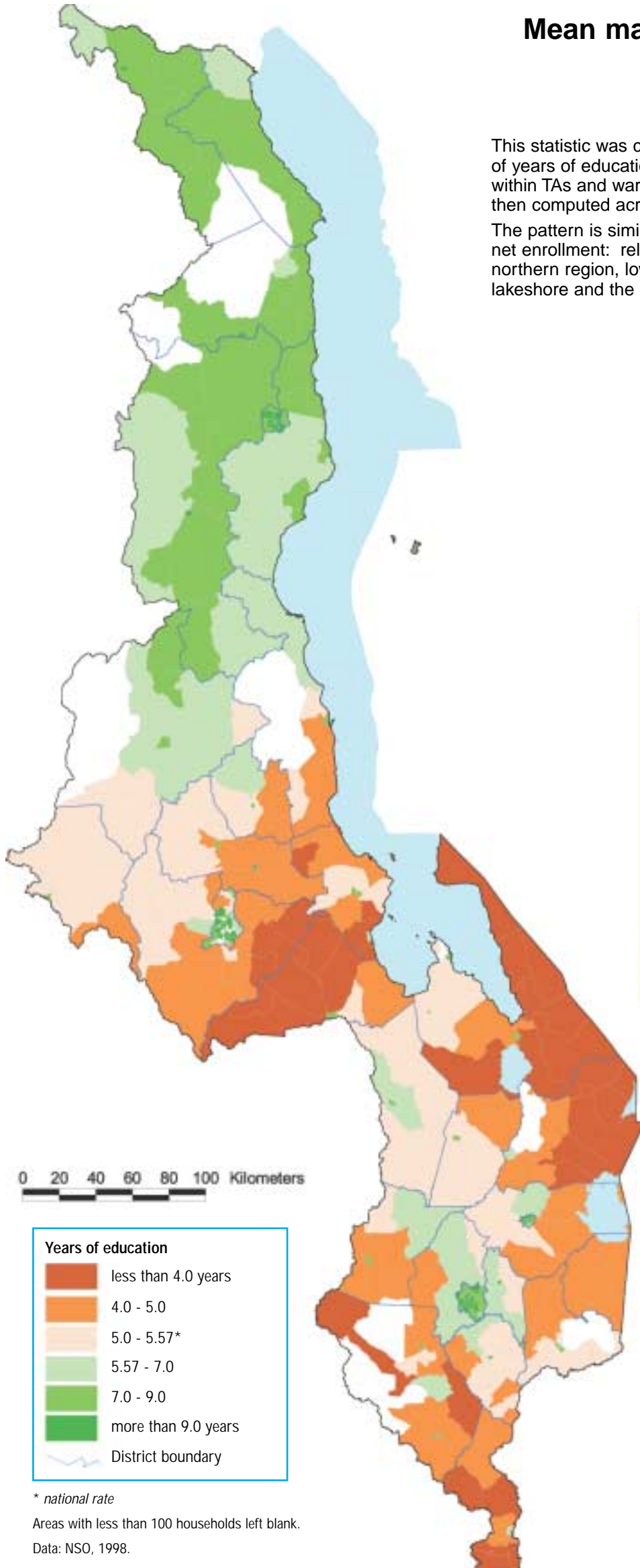


Mean maximum educational level in households

Malawi 1998

This statistic was computed by determining the highest number of years of education attained by members in each household within TAs and wards. The mean maximum education level was then computed across all households for each area.

The pattern is similar to that shown in other maps on literacy and net enrollment: relatively high levels in the urban areas and the northern region, low levels in the districts of the southern lakeshore and the lower Shire valley.



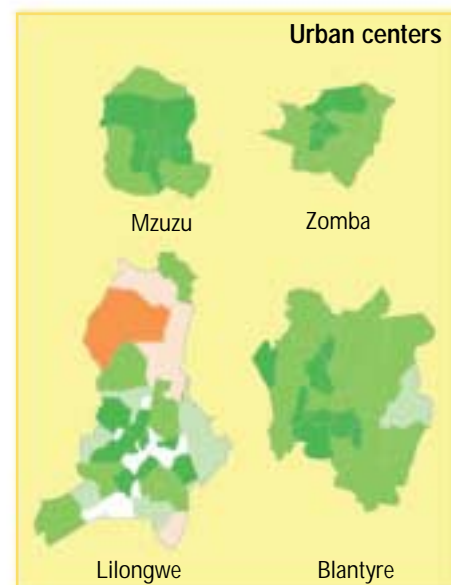
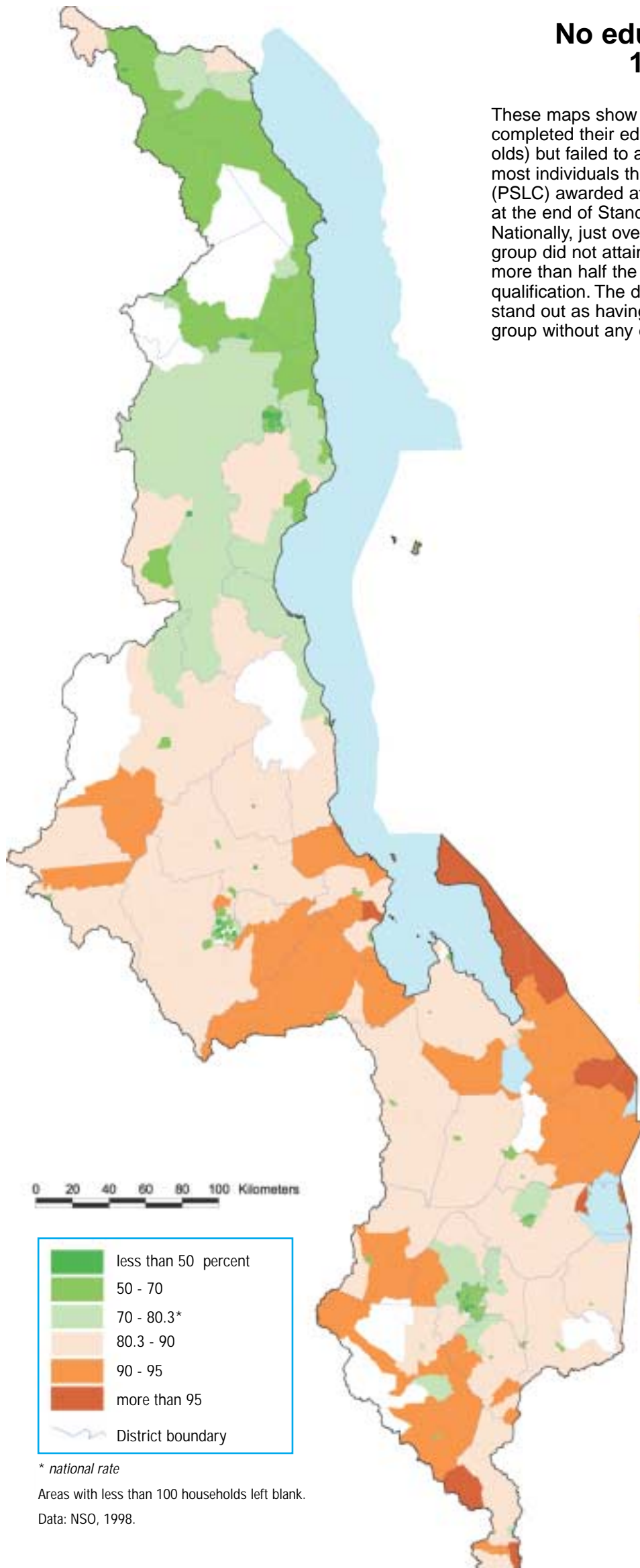
* national rate

Areas with less than 100 households left blank.

Data: NSO, 1998.

No educational qualification, 15 to 24 year olds

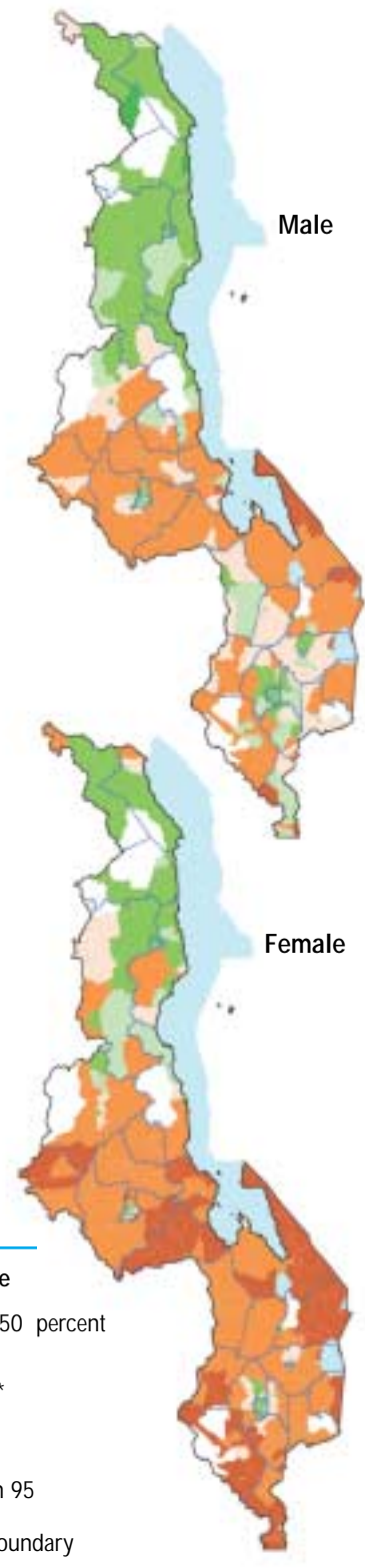
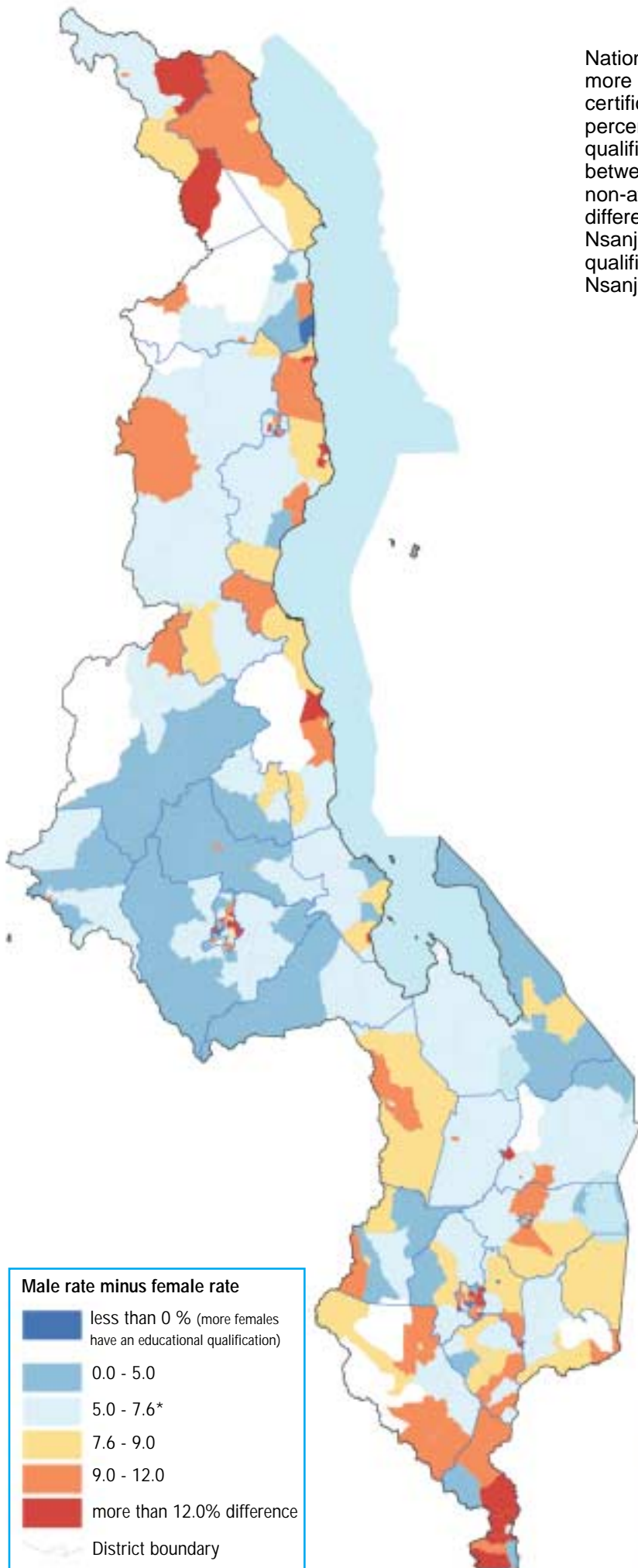
These maps show the distribution of individuals who should have completed their education according to their age (15-24 year olds) but failed to attain the lowest educational qualification; for most individuals this is the primary school leaving certificate (PSLC) awarded at the successful completion of the examination at the end of Standard 8, the highest primary class level. Nationally, just over 80 percent of the population in this age group did not attain the PSLC. Only in a few urban areas did more than half the population in this age group earn at least this qualification. The districts of Dedza, Mangochi, and Machinga stand out as having particularly high proportions of this age group without any educational qualifications.



No educational qualification, 15 to 24 year olds, gender differences

Malawi 1998

Nationally, for those individuals aged 15-24 years, 7.6 percent more men than women attained the primary school leaving certificate (PSLC) qualification; 76.3 percent of men and 83.9 percent of women in this age group have no educational qualifications, respectively. The overall pattern of differences between the sexes is unclear, primarily because overall rates of non-attainment of an educational qualification are so high. Large differences between the sexes are seen in both Karonga and in Nsanje districts; however, overall attainment of educational qualifications is considerably higher in Karonga than it is in Nsanje.



* national rate

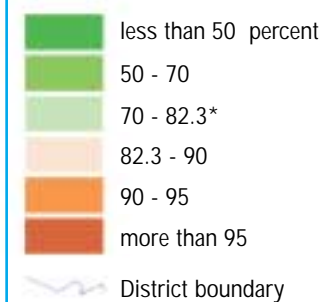
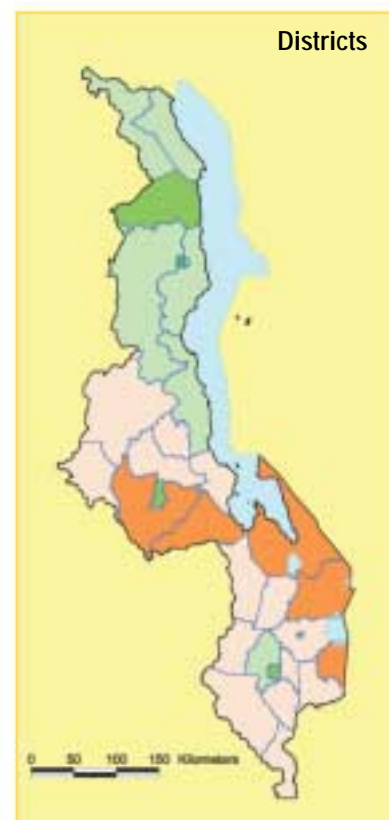
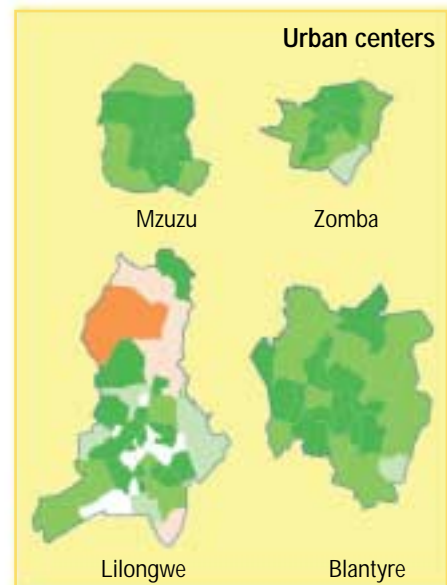
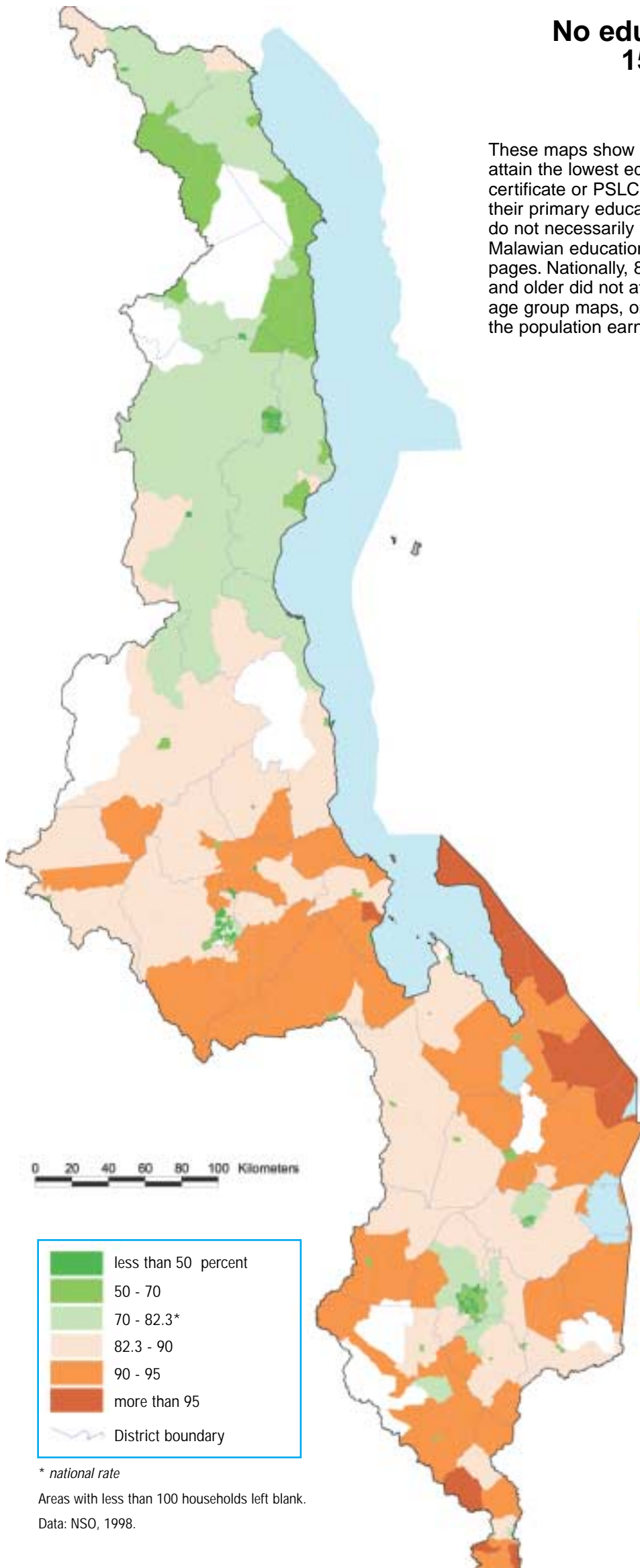
Areas with less than 100 households left blank.

Data: NSO, 1998.

No educational qualification, 15 years and older

Malawi 1998

These maps show the distribution of individuals who did not attain the lowest educational qualification (primary school leaving certificate or PSLC) by the time they should have completed their primary education (15 years and older). Note that the maps do not necessarily reflect the recent performance of the Malawian educational system as do those on the previous two pages. Nationally, 82.3 percent of the population aged 15 years and older did not attain the PSLC. As with the 15-24 year old age group maps, only in a few urban areas did more than half the population earn at least this qualification.



* national rate

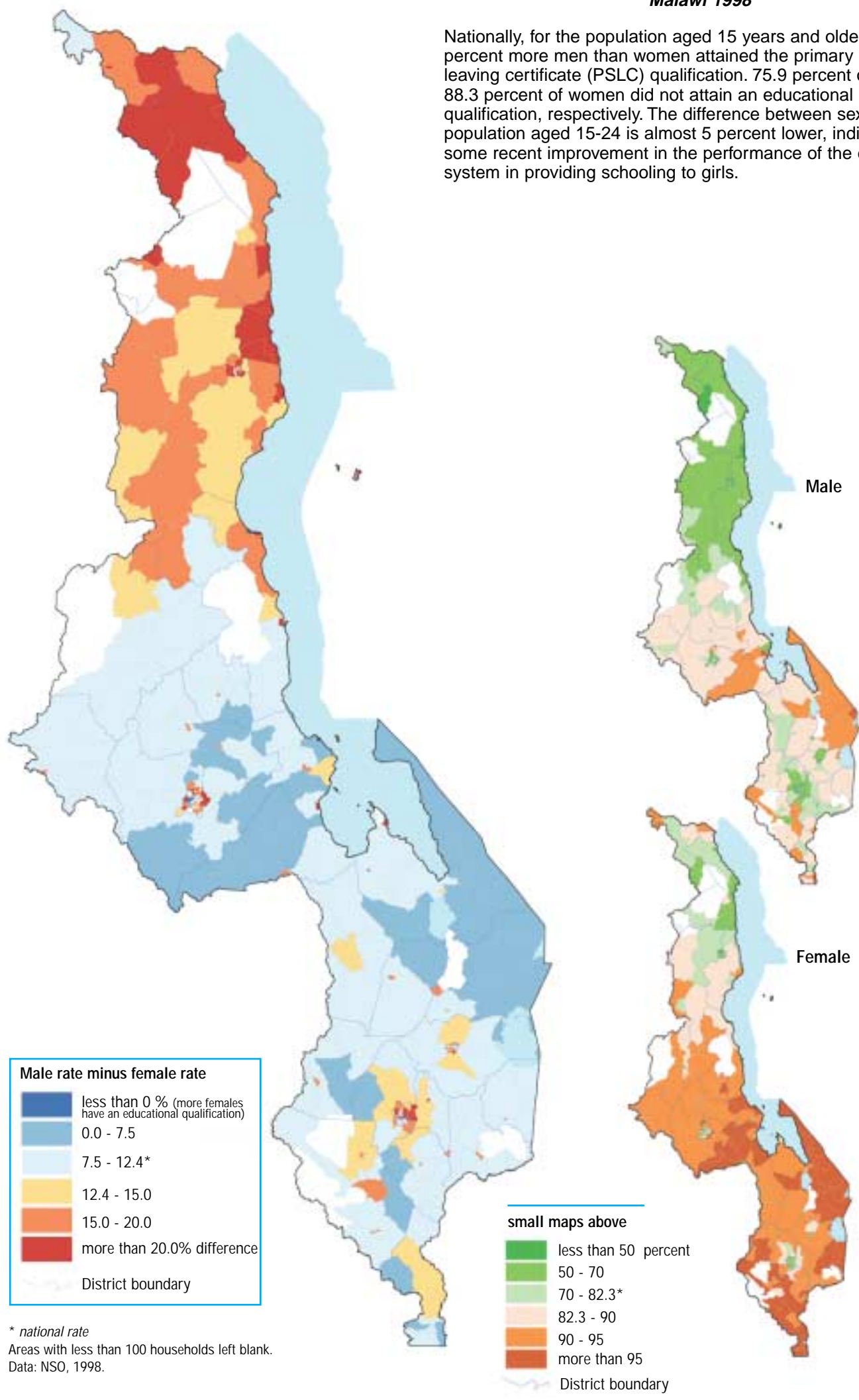
Areas with less than 100 households left blank.

Data: NSO, 1998.

No educational qualifications, 15 years and older, gender differences

Malawi 1998

Nationally, for the population aged 15 years and older, 12.4 percent more men than women attained the primary school leaving certificate (PSLC) qualification. 75.9 percent of men and 88.3 percent of women did not attain an educational qualification, respectively. The difference between sexes for the population aged 15-24 is almost 5 percent lower, indicating some recent improvement in the performance of the educational system in providing schooling to girls.



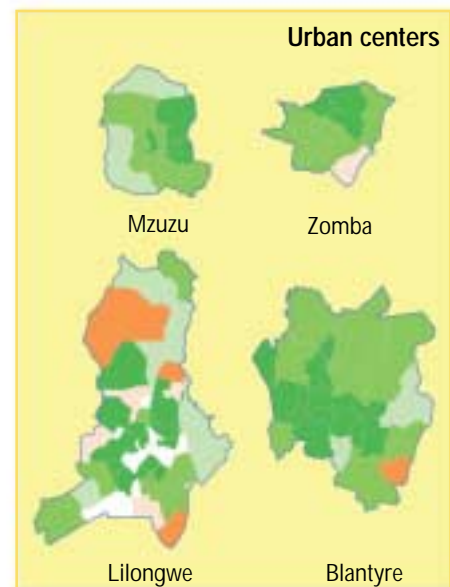
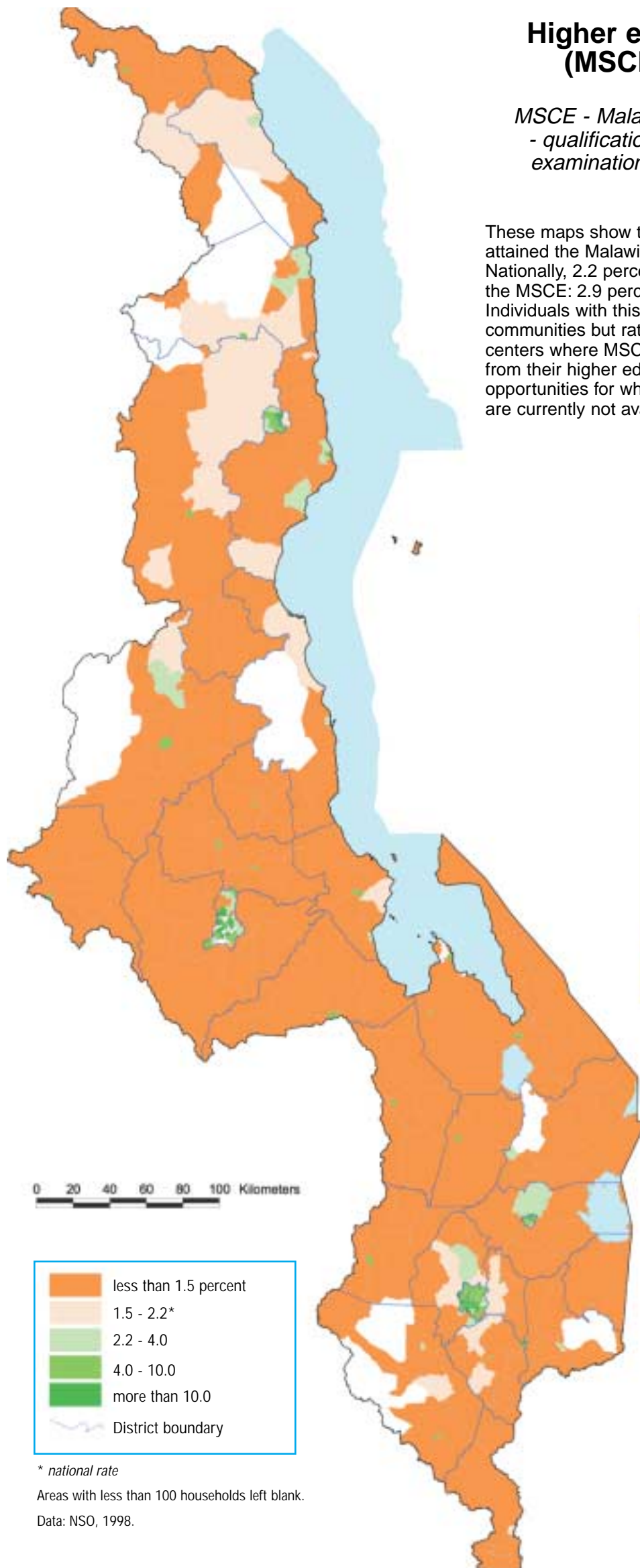
* national rate
Areas with less than 100 households left blank.
Data: NSO, 1998.

Higher educational qualification (MSCE), 15 to 24 year olds

MSCE - Malawi Schools Certificate of Education - qualification earned by successfully passing examinations at the end of secondary school

Malawi 1998

These maps show the distribution of 15-24 year olds who attained the Malawi schools certificate of education (MSCE). Nationally, 2.2 percent of individuals in this age group attained the MSCE: 2.9 percent of males and 1.6 percent of females. Individuals with this level of education do not remain in the rural communities but rather live in the urban centers. It is in the urban centers where MSCE holders can derive an economic return from their higher educational attainment. Such economic opportunities for which higher levels of education are necessary are currently not available in rural Malawi.

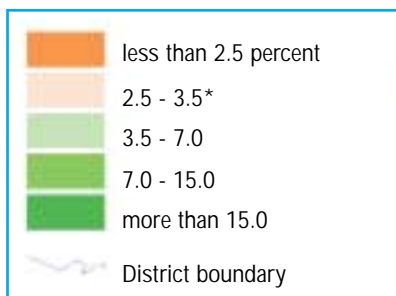
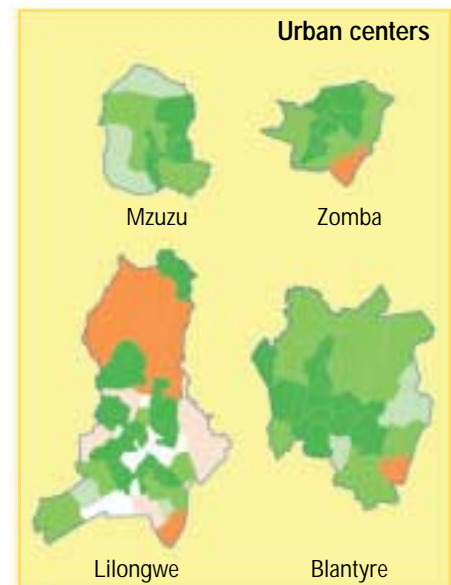
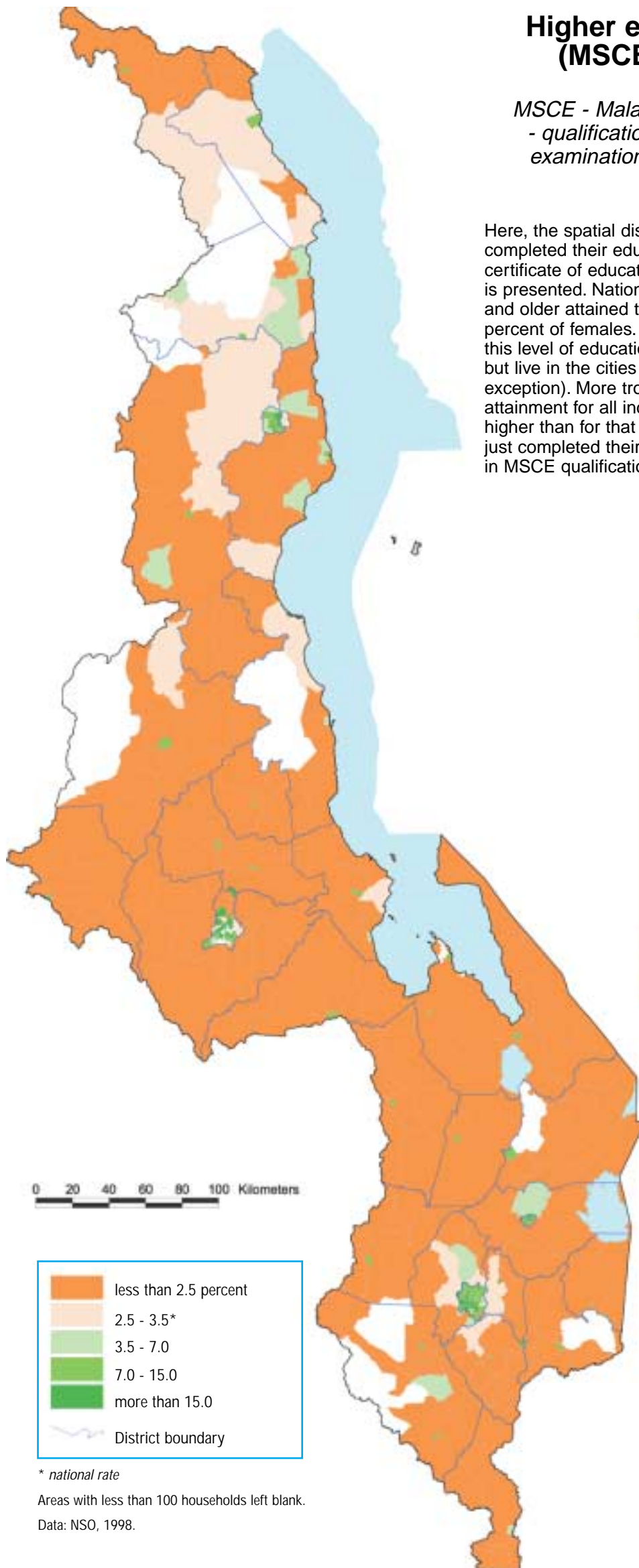


Higher educational qualification (MSCE), 15 years and older

MSCE - Malawi Schools Certificate of Education - qualification earned by successfully passing examinations at the end of secondary school

Malawi 1998

Here, the spatial distribution of individuals who should have completed their education and who attained the Malawi schools certificate of education (MSCE) at the end of secondary school is presented. Nationally, 3.5 percent of individuals aged 15 years and older attained the MSCE= 5.3 percent of males and 1.7 percent of females. As with the previous map, individuals with this level of education do not remain in the rural communities, but live in the cities (although Rumphii district is a slight exception). More troubling, however, is that the level of MSCE attainment for all individuals 15 years and older, 3.5 percent, is higher than for that of individuals aged 15 to 24 years who have just completed their schooling, 2.2 percent, indicating a decline in MSCE qualification rates in recent years.



* national rate

Areas with less than 100 households left blank.

Data: NSO, 1998.

Educational facilities

Malawi - 2001

Primary schools

These maps show the location of the majority of primary and secondary schools in Malawi. This information was collected by the Ministry of Education in 2001 on about 4,700 primary schools (junior, senior, and junior and senior combined) and just under 700 secondary schools.

Unfortunately, no information was collected on schools in the Chiradzulu district. Moreover, for about 10 percent of all schools, the information collected was incomplete, so these schools could not be mapped.



Secondary schools



Each dot represents one school

Chiradzulu district - no data

District boundary

Data: Ministry of Education, 2001.

Ratios of primary school pupils to teachers and primary-aged children to teachers

Malawi

Primary school pupils per teacher

These two maps provide an indication of the level of provision of instruction to primary school students and to the potential primary school population for each TA. These statistics were computed by coupling the 2001 educational facilities inventory data of the Ministry of Education with the 1998 census data.

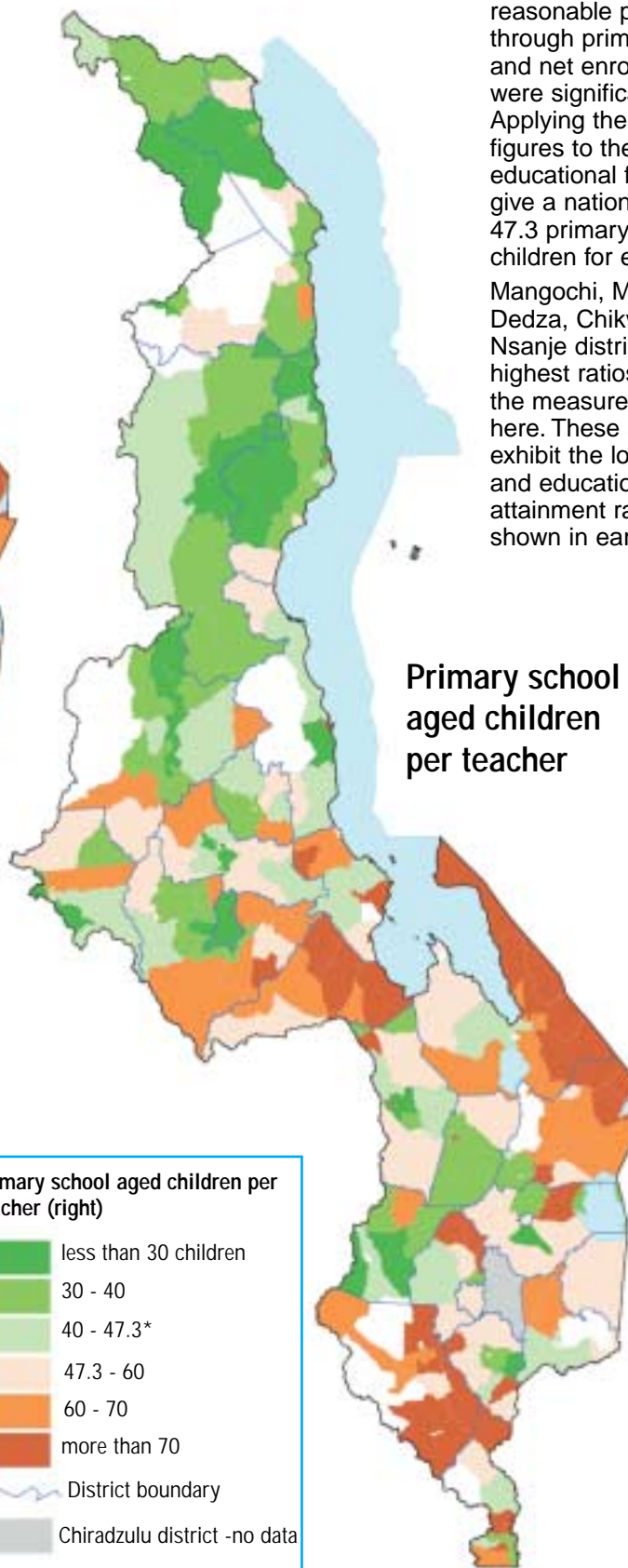
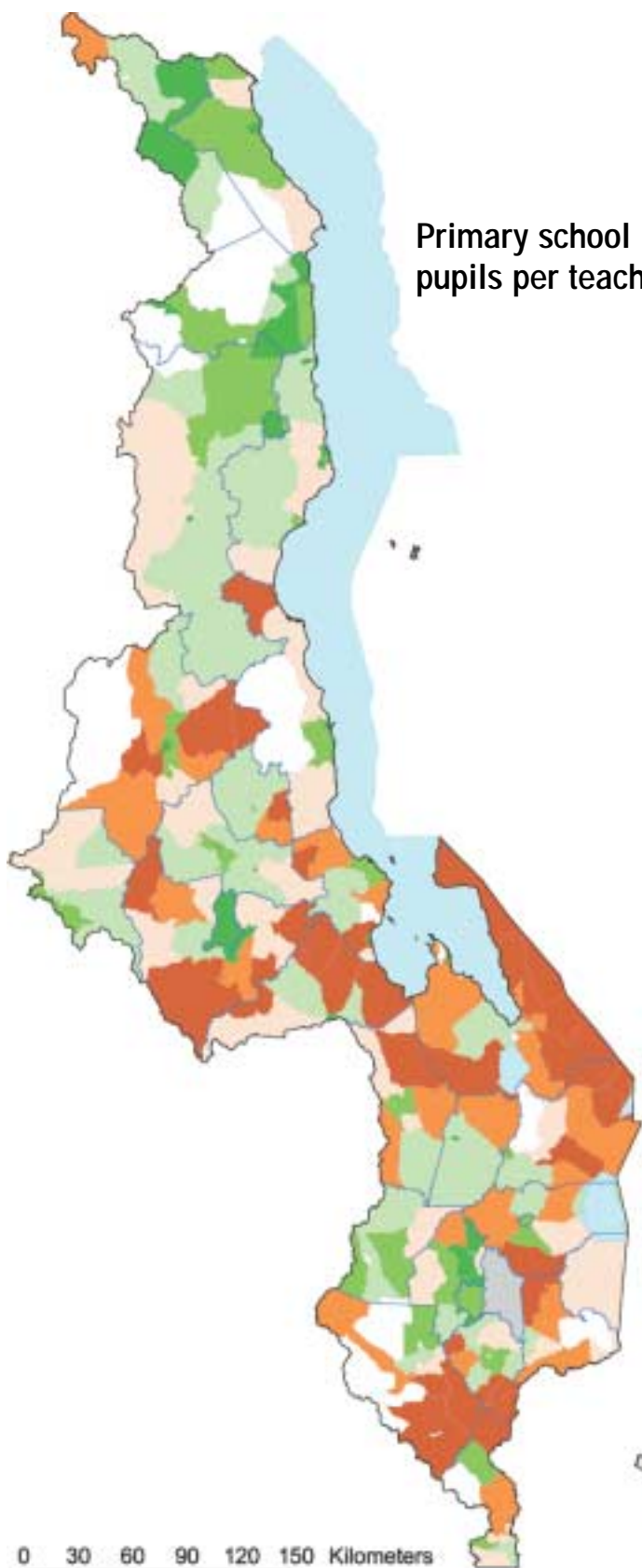
The primary school pupils per teacher ratio indicates the number of children each teacher must instruct. The national rate is 69.8 pupils per teacher. This very high level is due to the introduction of universal free primary education in the mid-1990s resulting in an influx of students into the primary school system which had insufficient teachers to instruct them.

The ratio of teachers to the number of children of primary school age (6 to 13) shows the potential demand for teachers if

students were to make reasonable progress through primary school and net enrollment rates were significantly higher. Applying the 1998 census figures to the 2001 educational facilities data give a national statistics of 47.3 primary school aged children for each teacher.

Mangochi, Machinga, Dedza, Chikwawa, and Nsanje district have the highest ratios for both of the measures mapped here. These areas also exhibit the lowest literacy and educational attainment rates, as shown in earlier maps.

Primary school aged children per teacher



0 30 60 90 120 150 Kilometers

Primary school pupils per teacher (above)

- less than 50 pupils
- 50 - 60
- 60 - 69.8*
- 69.8 - 80
- 80 - 90
- more than 90
- District boundary
- Chiradzulu district -no data

Primary school aged children per teacher (right)

- less than 30 children
- 30 - 40
- 40 - 47.3*
- 47.3 - 60
- 60 - 70
- more than 70
- District boundary
- Chiradzulu district -no data

* national rate

Areas with less than 100 households left blank.

Data: NSO, 1998.